

## DBK Drymatic Boost Bar

### Targeted Heat Drying... At Its Finest

The Drymatic Boost Bar is one of the most advanced auxilliary heat systems on the market.

The Boost Bar is designed to give water damage professionals the ability to deliver temperature controlled air to a wide range of affected spaces quickly, efficiently and safely. The Boost Bar allows the user to select maximum temperature conditions, giving them full control over their drying installation.

The Boost Bar can be coupled with a Drymatic Wall or Floor System to enable direct target drying of wet materials or alternatively it can be connected to a range of Boost Bar Adaptors to enable cavity, ceiling void, crawlspace and under-cupboard drying.

#### TECHNICAL DATA

Operating Voltage	230V   50Hz
Operating Power	2.2kW @ 20°C (Varies with Airflow)
Maximum Current	10A
Dimensions	689 x 300 x 201mm
Weight	7.6KG
Construction	Rotomoulded Housing
Storage Temperature	-20°C to +50°C
Operating Temperature	-10°C to 50°C
Maximum Air-Off Temperature	50°C



#### Features:

- Lightweight and portable
- Uses ultra-safe, self-regulating PTC heating technology
- Digital temperature control
- Detects loss of air movement
- Saves energy, time and strip-out
- Flexible adaptor system
- Bluetooth enabled for future technologies



**Order today using product code FGPH102**

# Building Restoration

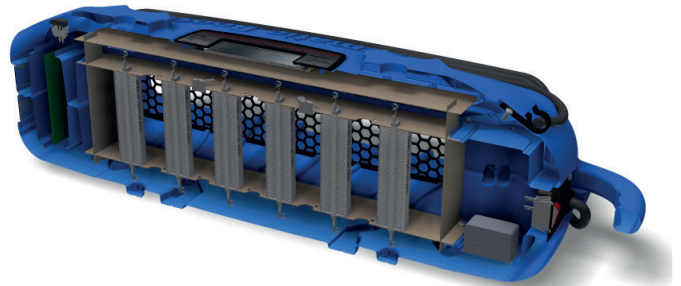
## DBK Drymatic Boost Bar

### Intelligent Target Drying...

The Drymatic Boost Bar uses DBK's unique electrically insulated PTC technology which provides not only controlled heat but also energy-saving characteristics. PTC technology is self-regulating and inherently safe; this means that even if your airmover is switched off, or a blockage occurs, the unit will automatically protect itself and reduce the power of the heater.

Boost Bar is designed to be lightweight, compact and portable, meeting the demands of today's damage management technicians. The device comes with robust stacking features that guarantee safe transportation of the units whilst loaded in your vehicle.

Equipment maintenance is critical so Boost Bar has been designed to be simple and easy to clean and service. Simply remove four retaining screws and the unit splits into two sections.



### PRODUCT IMAGES



Lock your Boost Bar with the new Pin Lock feature to prevent anyone tampering with the device on-site



Boost Bar continuously monitors and logs energy usage and temperature differential across the heater.

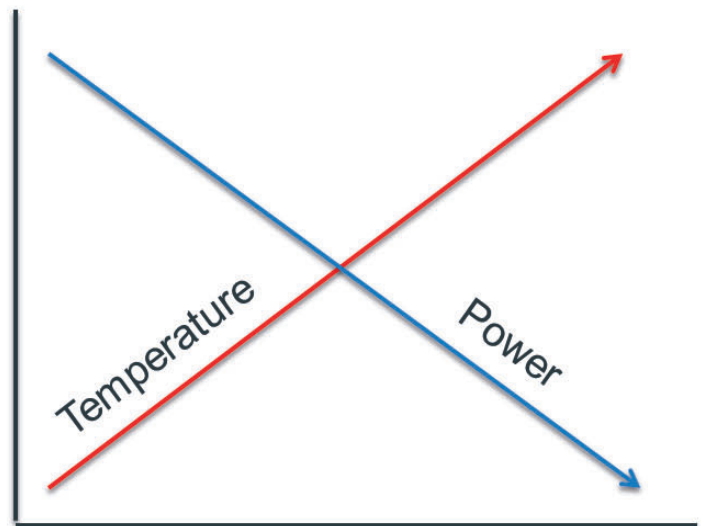
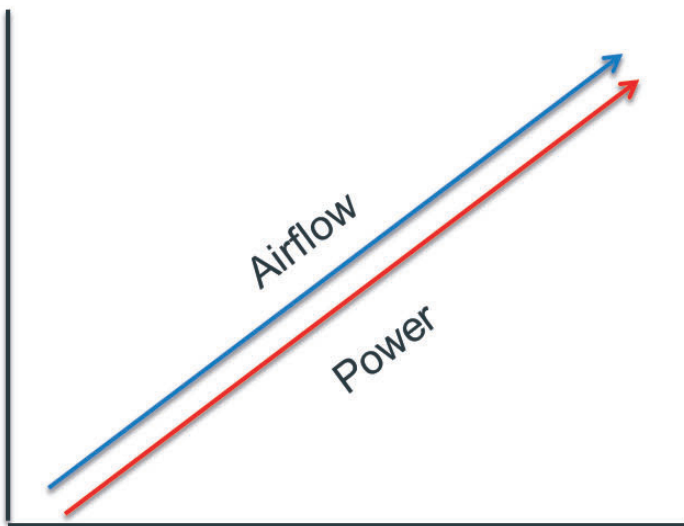


## DBK Drymatic Boost Bar

Compliment your existing equipment...



Boost Bar adds controlled heat to the process air of many drying system.



Boost Bar adjusts its power consumption based on the volume of incoming airflow and also the temperature of the incoming airflow. If airflow is lost the Boost Bar automatically powers down the heating elements and waits for airflow to return.

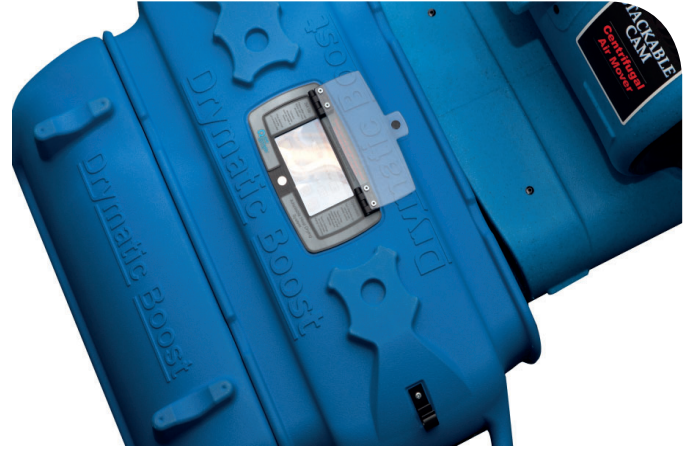
## Boost Bar 90Deg Adaptor

### Direct your heat above or below

The Drymatic Boost Bar 90Deg Adaptor channels the heated airflow up towards ceiling level or it can be rotated to channel the airflow down in to a subfloor or crawlspace.

Simply slide the adaptor in to either side of the Drymatic Boost Bar and either allow the air to flow in the direction of choice or attach layflat ducting to the connector and take the air up into a ceiling void or a different area of the structure.

When drying crawlspace or subfloor areas the airflow can be channeled downwards into the drying chamber. Simply remove a section of the floor or subfloor and place the unit so that the air is channeled down through the opening.



#### Features:

- Specifically designed for Boost Bar
- Rotomoulded construction
- Reversible system
- Designed to divert heated airflow down into a crawlspace or subfloor
- Allows attachment of layflat ducting
- Helps to keep warm, dry airflow away from sensitive flooring materials when required.

#### PRODUCT IMAGES



**Order today using product code FGB342**

## Boost Bar 4-Port Adaptor

### Deliver your energy where it is needed most!

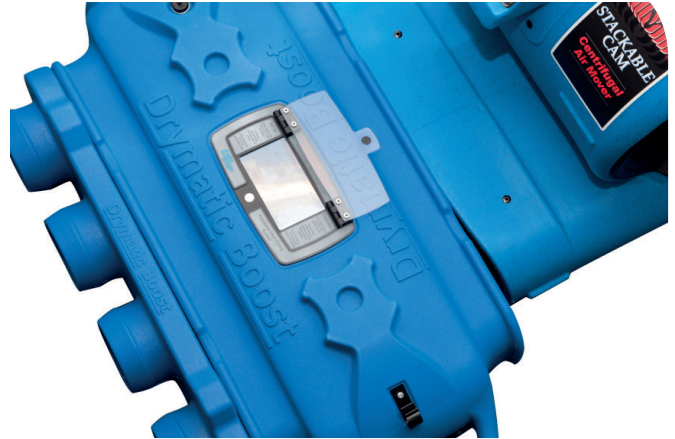
The Drymatic Boost Bar 4-Port Adaptor gives you the ability to take heated airflow from the system and deliver it to four separate drying chambers.

When using the adaptor you do not have to place the Boost Bar in the drying chamber itself, just feed the 4 x 100mm pipes from the unit to the drying chamber. Perfect for:

- Crawlspace drying
- Tented chambers
- Ceiling Voids
- Cavity Walls

The 4 Port Adaptor can be used with lengths of layflat tubing to improve airflow over longer distances. Distribute your heated airflow along an affected area by perforating your layflat and tying it off at the end!

### PRODUCT INFORMATION



### Features:

- Specifically designed for Boost Bar
- Rotomoulded construction
- Allows connection of pipes (supplied with product) or layflat ducting
- Allows Boost Bar to be placed outside of the drying chamber
- Perfect for ceiling voids, cavities, tented areas and crawlspaces
- Supplied in kit form



**Order today using product code FGB341**

# Building Restoration



## Boost Bar 12-Port Adaptor

### Creating a versatile cavity drying system...

The Drymatic Boost Bar 12-Port adaptor is the perfect tool for introducing temperature controlled, dry air into hard to reach areas of water damage.

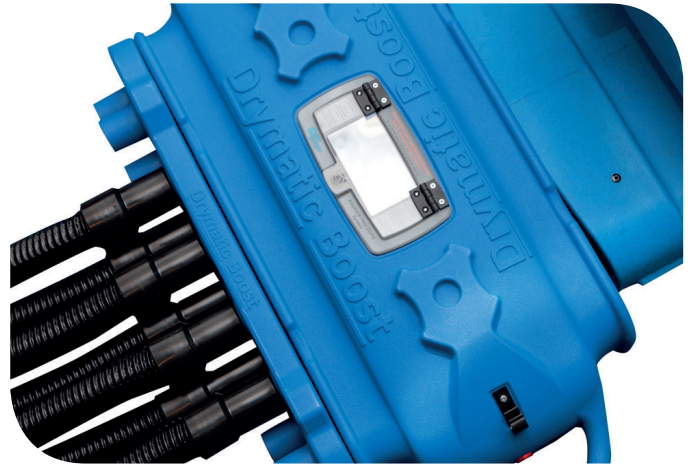
The system uses 12 x 38mm pipes to deliver the heated air in to areas such as:

- Kitchen Cabinets
- Cavity Walls
- Ceiling Voids
- Crawlspace and Subfloors

The 12-Port Adaptor provides a minimally invasive way of restoring water damaged materials; saving time, effort and minimising strip-out.

Supplied in kit form, the 12-Port Adaptor is supplied with 30m of Wireflex Pipe, 12 Plastic Cuffs and a wheeled kit bag.

### PRODUCT INFORMATION



### Features:

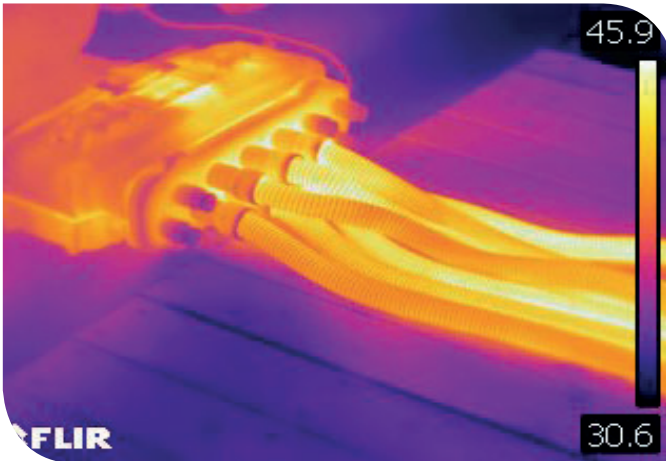
- Specifically designed for Boost Bar
- Rotomolded construction
- Can be used with layflat ducting or the pipe kit supplied with the unit
- Distributes the heated airflow delivered by the Boost Bar into multiple spaces.
- Minimises strip-out works
- Supplied in kit form



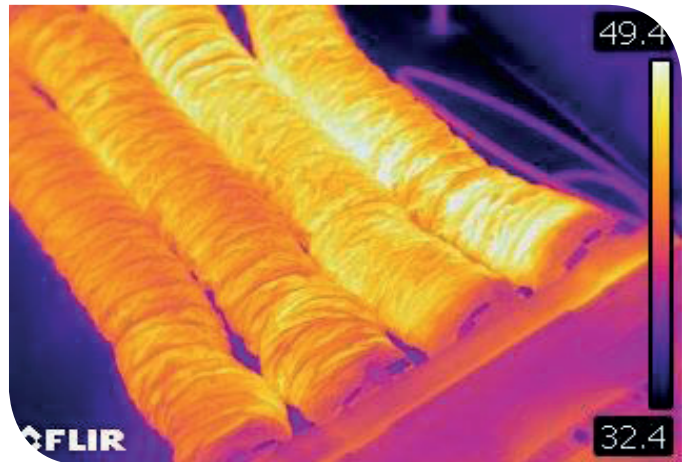
**Order today using product code FGB340**

## Boost Bar In Use

### 12-Port Drying Kit



### 4-Port Drying Kit



### Boost Bar and Mats





# DBK Drymatic Boost Bar

## PRODUCT DESCRIPTION AND PRICING



### DRYMATIC BOOST BAR (FGPH102)

**Price: Please contact your local representative**

- Adaptive Heat Drying System
- Touch screen provides feedback to the user and gives control over temperature and power levels
- Rotomoulded for toughness and durability
- Operates in freezing temperatures up to 50C



### 90DEG ADAPTOR (FGB342)

**Price: Please contact your local representative**

- Diverts heated airflow down into a subfloor space or upwards into a wall cavity
- Rotomoulded for toughness and durability
- Temperature resistant materials
- Removes the need for plastic ducting



### 4-PORT DRYING KIT (FGB341)

**Price: Please contact your local representative**

- Splits heated airflow into 4 separate channels
- Enables connection of layflat ducting or 100mm hoses
- Perfect for ducting into ceiling voids, subfloor spaces or cavities.
- Comes with 4-Port Adaptor, 4 x 6m hoses, jubilee clips, and a carry bag



### 12-PORT DRYING KIT (FGB340)

**Price: Please contact your local representative**

- Splits heated airflow into 12 separate channels
- Enables connection of 38mm hose connections
- Perfect for ducting kitchen cabinet spaces, cavity walls and ceilings.
- Comes with 12-Port Adaptor, 30m of 38mm pipe, 12 plastic cuffs, and a carry bag